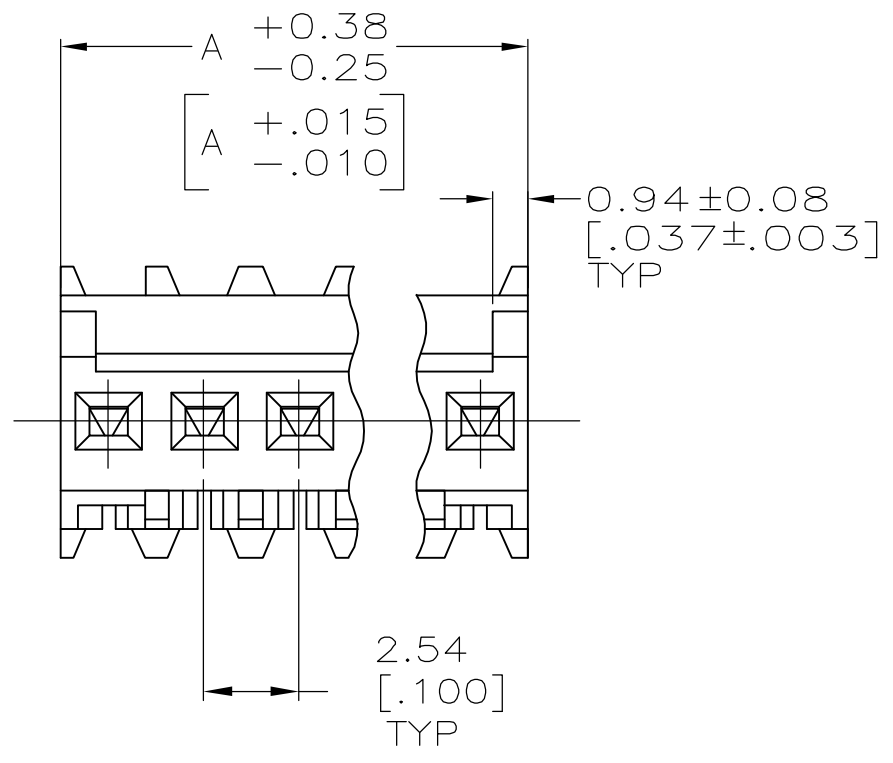
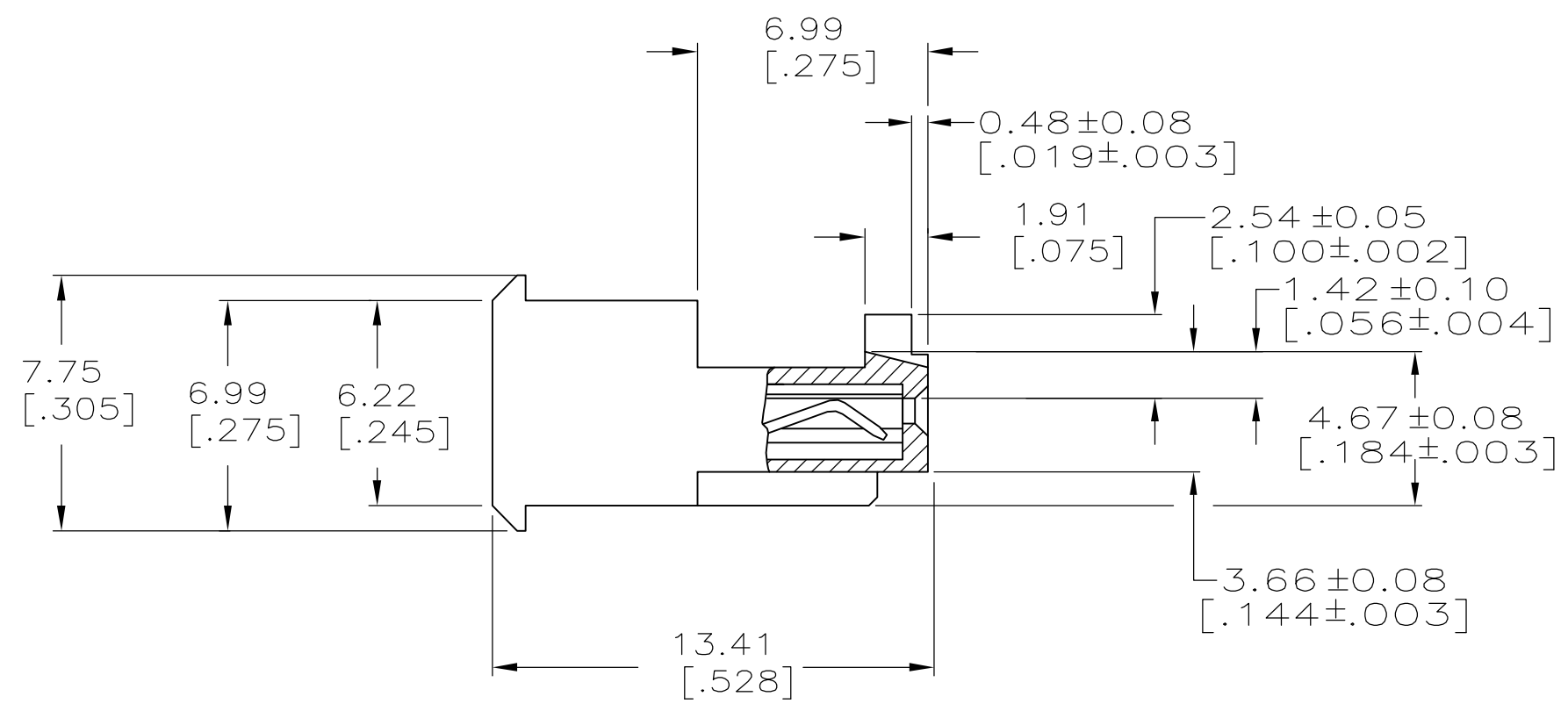
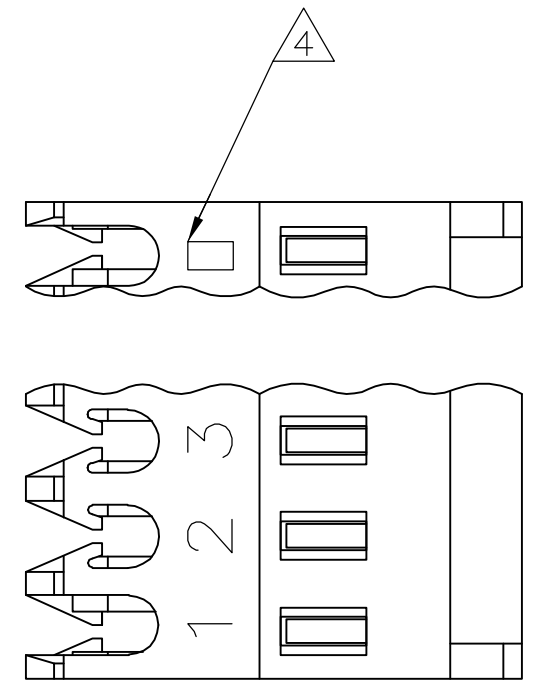


THIS DRAWING IS UNPUBLISHED. RELEASED FOR PUBLICATION
 © COPYRIGHT BY TYCO ELECTRONICS CORPORATION. ALL RIGHTS RESERVED.

LOC		DIST		REVISIONS			
P	LTR	DESCRIPTION		DATE	DWN	APVD	
B		REVISION PER ECO-07-003727		23FEB07	KW	DB	



LEAD FREE	38.10	[1.500]	15	4-644579-5
		35.56	[1.400]	14
	33.02	[1.300]	13	4-644579-3
	30.48	[1.200]	12	4-644579-2
	27.94	[1.100]	11	4-644579-1
	25.40	[1.000]	10	4-644579-0
	22.86	[.900]	9	3-644579-9
	20.32	[.800]	8	3-644579-8
	17.78	[.700]	7	3-644579-7
	15.24	[.600]	6	3-644579-6
	12.70	[.500]	5	3-644579-5
	10.16	[.400]	4	3-644579-4
	7.62	[.300]	3	3-644579-3
	5.08	[.200]	2	3-644579-2
CONTAINS LEAD	38.10	[1.500]	15	1-644579-5
	35.56	[1.400]	14	1-644579-4
	33.02	[1.300]	13	1-644579-3
	30.48	[1.200]	12	1-644579-2
	27.94	[1.100]	11	1-644579-1
	25.40	[1.000]	10	1-644579-0
	22.86	[.900]	9	644579-9
	20.32	[.800]	8	644579-8
	17.78	[.700]	7	644579-7
	15.24	[.600]	6	644579-6
	12.70	[.500]	5	644579-5
	10.16	[.400]	4	644579-4
	7.62	[.300]	3	644579-3
5.08	[.200]	2	644579-2	
DIM A		NO. OF POSN		ASSEMBLY

△ MATERIAL: CONNECTOR-NYLON UL94V-0 (BLACK).
 CONTACTS-0.30 [.012] THICK COPPER ALLOY
 BRIGHT TIN-LEAD 0.00203 [.000080] MIN THICK FOR CONTACTS
 644579-2 THRU 1-644579-5
 MATTE WHISKER MITIGATED TIN PLATE 0.00203 [.000080] MIN THICK
 OVER 0.00076 [.000030] MIN THICK NICKEL FOR CONTACTS
 3-644579-2 THRU 4-644579-5

- CONTACTS ACCEPT 24 AWG WIRE WITH 1.52 [.060] MAX INSULATION DIAMETER.
- CONTACTS MUST ACCEPT 0.64±0.03 [.025±.001] SQUARE POST AND REMAIN LOCKED IN POSITION.
- IDENTIFICATION NUMBER FOR LAST CIRCUIT MAY NOT APPEAR ON ALL ASSEMBLIES.
- DIMENSIONS IN BRACKETS ARE IN INCHES.
- HOUSING FEATURES ARE: FEED THRU WITH LOCKING RAMP AND WITH POLARIZING TAB.

METRIC

THIS DRAWING IS A CONTROLLED DOCUMENT.

DIMENSIONS: mm [INCHES]	TOLERANCES UNLESS OTHERWISE SPECIFIED: 0 PLC ± 1 PLC ± 2 PLC ± 0.13 [.005] 3 PLC ± 4 PLC ± ANGLES ± FINISH △	DWN S. HOOVER 03-DEC-2004 CHK D. BOSSI 03-DEC-2004 APVD D. BOSSI 03-DEC-2004	tyco Electronics Tyco Electronics Corporation Harrisburg, Pa 17105-3608
		PRODUCT SPEC 108-1050	NAME MTA .100 CONNECTOR ASSEMBLY 24 AWG, UL94V-0, SPECIAL
MATERIAL △	FINISH △	APPLICATION SPEC 114-1019	SIZE CAGE CODE DRAWING NO RESTRICTED TO A2 00779 C=644579
CUSTOMER DRAWING		SCALE 5:1	SHEET 1 OF 1 REV B